

GOLDSMITHS CCA

VENUE HIRE

GOLDSMITHS CENTRE
FOR CONTEMPORARY ART

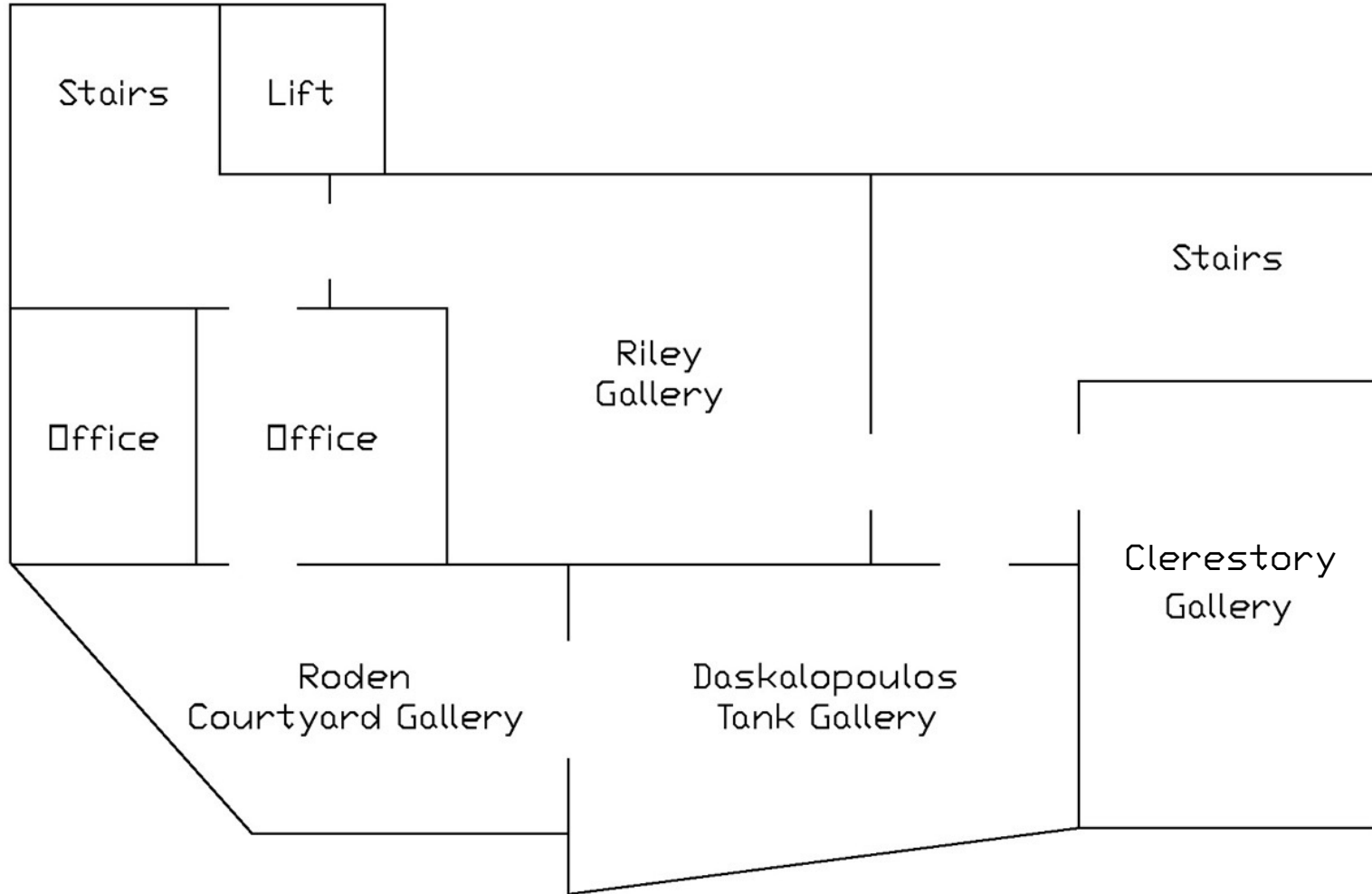
OSIN BYRNE
FEAT GARY
FARRELLY

ALEXIS
HUNTER

KRIS
LEMSALU



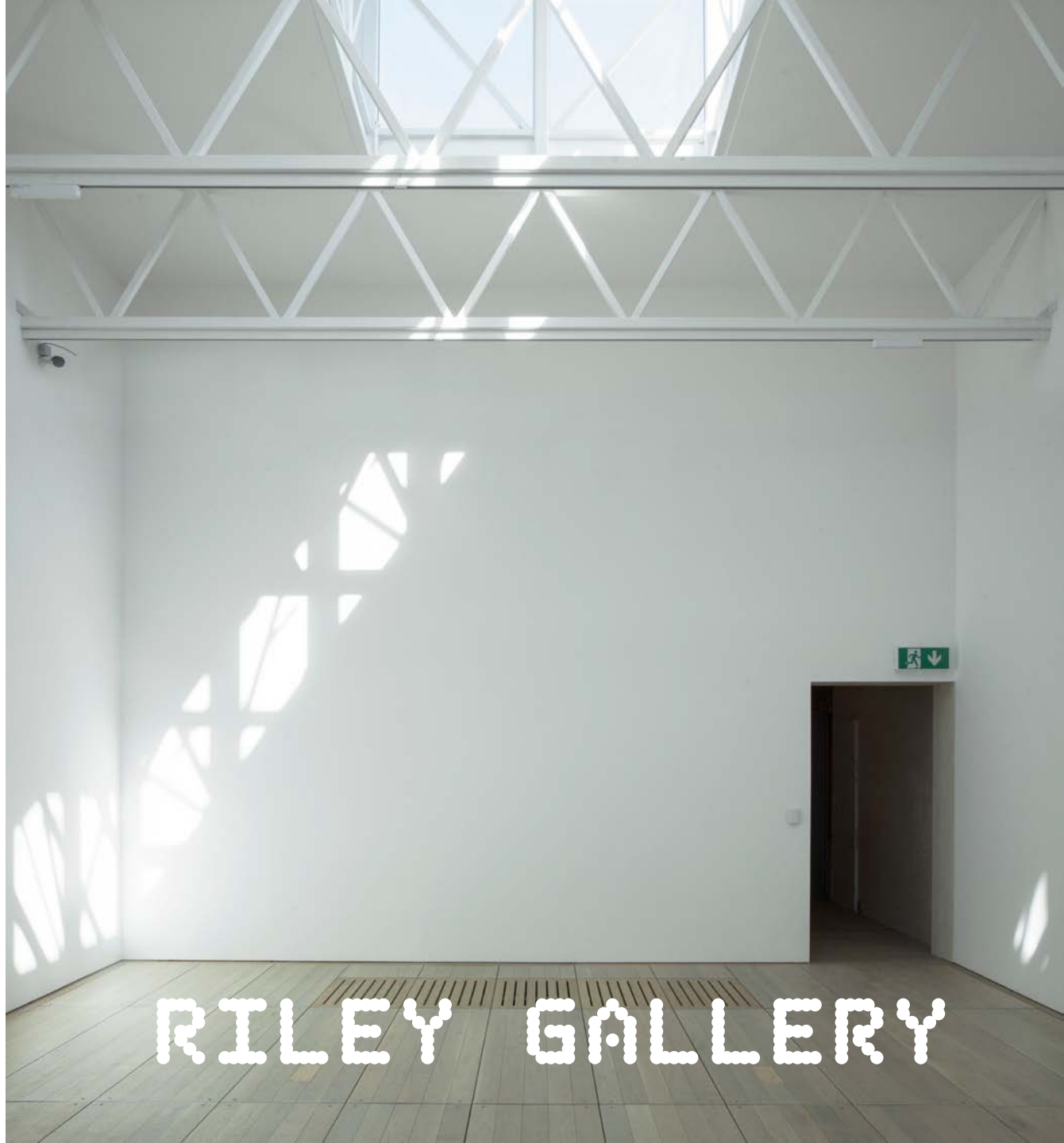
FIRST FLOOR



Riley Gallery:	62m ²
Clerestory Gallery:	49m ²
Daskalopoulos Gallery:	78m ²
Roden Coutyard Gallery:	49m ²



CLERESTORY GALLERY



RILEY GALLERY

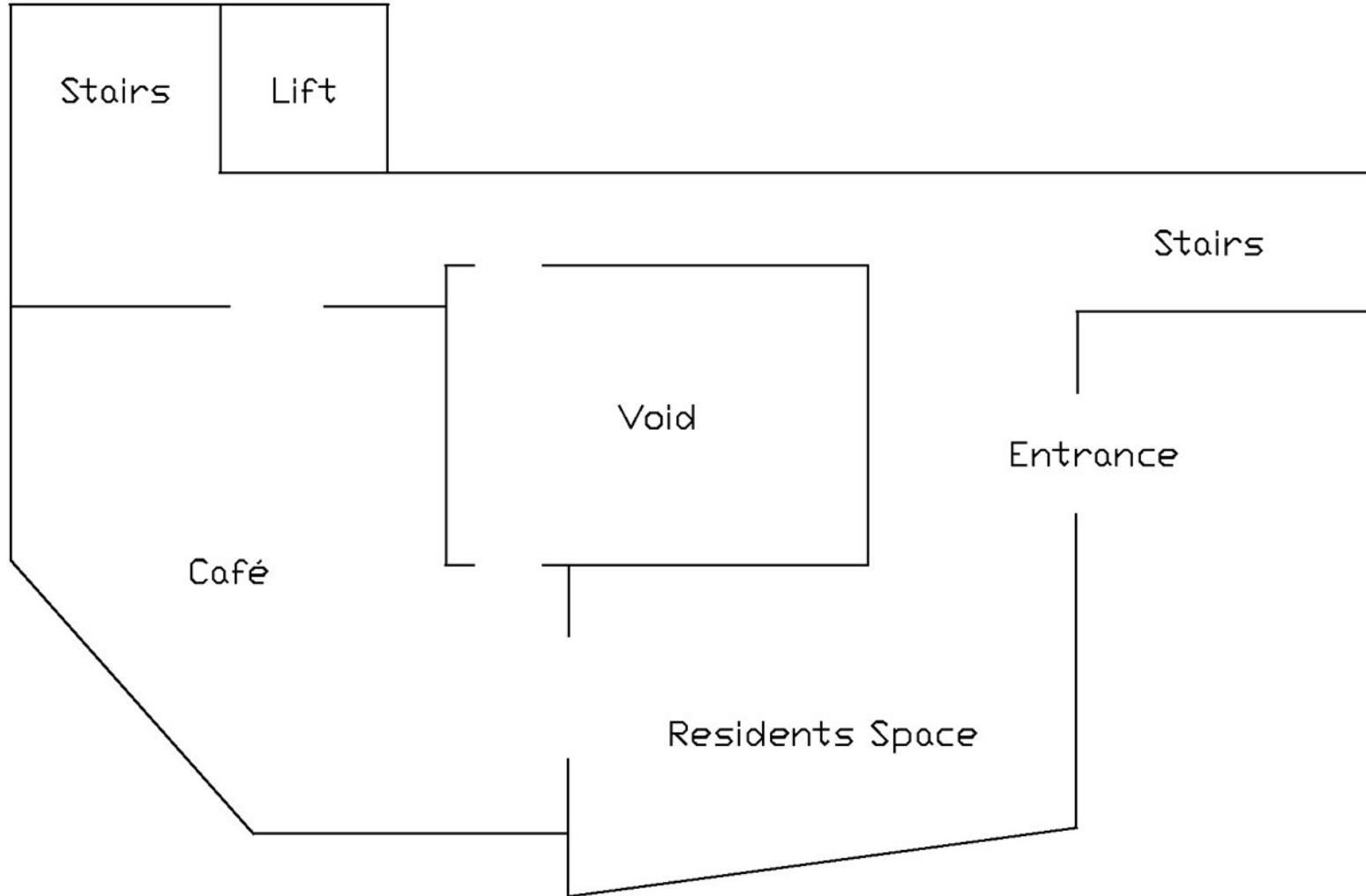


TANK GALLERY



COURTYARD GALLERY

GROUND FLOOR



Residents Space: 68m²

Café: 68m²



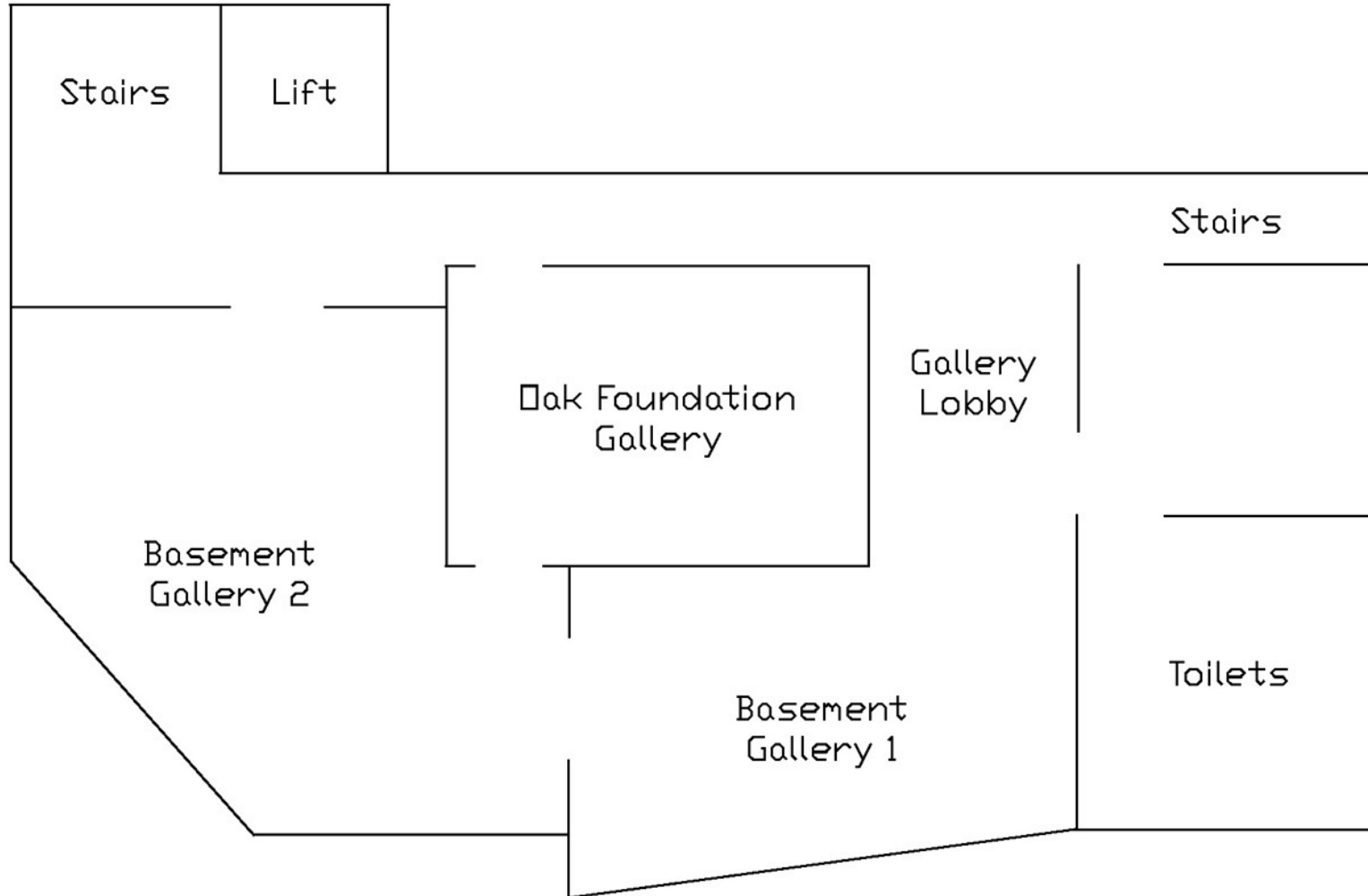


CAFE

A man and a woman are looking at a wall in a brick building under renovation. The man, with grey hair and a beard, is wearing a brown jacket and is pointing at the wall. The woman, with long brown hair, is wearing a light blue shirt. They are standing in a narrow corridor or balcony area. The walls are made of white-painted bricks, and there are large, irregular holes in the walls, suggesting ongoing construction or demolition. The lighting is bright, and the overall atmosphere is one of focused inspection.

CORRIDOR OVER OAK GALLERY

BASEMENT



Gallery Lobby:	34m ²
Basement Gallery 1:	67m ²
Basement Gallery 2:	72m ²
Oak Foundation Gallery:	63m ²



GALLERY LOBBY



BASEMENT GALLERY 1



BASEMENT GALLERY 2



OAK GALLERY



OAK GALLERY

GETTING HERE

Goldsmiths CCA
St James'
New Cross
London SE14 6AD

New Cross Gate is a 3-minute walk from the gallery, and is a wheelchair accessible station. New Cross is an 8-minute walk from the gallery and is a wheelchair accessible station.

By bus:
21, 53, 136, 171, 172, 177, 321, 436, 453
stop at the end of St James, a 2-minute walk from the gallery (Stop □).

By car:
There are limited parking opportunities on St James. Visitors with a blue badge can contact the gallery for assistance.





CONTACT US

To discuss venue hire, please contact the CCA team:

GALLERY MANAGER

Oliver Fuke

o.fuke@gold.ac.uk

GALLERY COORDINATOR

Nisha Desai

nisha.desai@gold.ac.uk